



MOD AT HOME

Installation, Cabinet Care and Warranty Information

GENERAL INSTALLATION

Please print this for your installer.

Professional

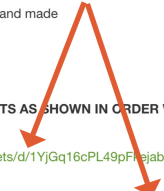

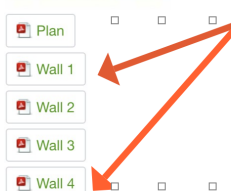
Mod Cabinetry uses the same general installation and best practices used for European Frameless Cabinets. This type of cabinet construction requires finesse and skill above that which is needed to install American Framed Cabinets. Added details include precise leveling (due to an all flush installation) and subsequent adjustments after installation, such as adjusting door and drawer depth, levels and drawers fronts. Be sure that you work only use a professional installer with experience installing European Frameless Cabinets. When you interview an installer show them this packet and confirm they are familiar with the basics such as setting cabinetry, leveling, shimming, scribing, adjusting drawers and doors on frameless cabinets, installing applied end panels as well as other general cabinetry installation techniques.

DIY

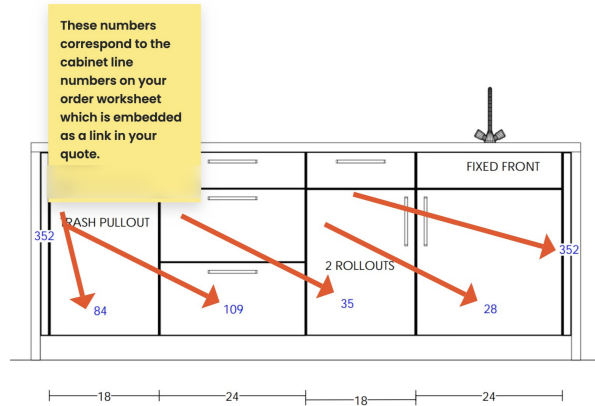
We posted a video and general installation instructions on our website for DIY installers. This information comes from reputable sources, yet we cannot certify its completeness <https://www.modcabinetry.com/more-info/how-to-install/>. We do not offer installation support beyond what we have published online and we cannot be held responsible for the effects of subpar installation quality and technique.

HOW TO MAP YOUR CABINETS TO YOUR ORDER FORM

We will show you step by step how to map your cabinets at the job site with the cabinets in the layout and order worksheet

<p>1. Open up your quote</p>	
<p>2. Open the order worksheet. If you have two-tone or several orders you will see 2 or more links, one for each order. <i>Refer to the image to show you what to look for.</i></p>	<p>KITCHEN NOTES V3 Kitchen</p> <hr/> <p><small>Naturals by Mod Cabinetry</small> Naturals by Mod Cabinetry PRICE AND DESIGN</p> <p>YOUR CUSTOM QUALITY Full Construction Specs Videos and Photos: https://modcab.in/3qMCotF Standard Sizing Catalog: https://modcab.in/3FPwkxv Cabinet Construction: European Frameless Casework: 3/4" Maple Plywood Drawer Glides and Box: Blum full extension slide undermount w/ soft-closing and 5/8" Solid wood dovetail drawer Healthy Home: CARB Phase 2 Certified Country of Origin: All USA sourced and made</p> <p>Price Level Naturals 2 Naturals 2</p> <p>YOUR ORDER INCLUDES CABINETS AS SHOWN IN ORDER WORKSHEET LINKED HERE. PLEASE REVIEW https://docs.google.com/spreadsheets/d/1YjGq16cPL49pFjebYItOyClbx8VZyAGGqVomkhs4/edit?usp=sharing https://docs.google.com/spreadsheets/d/1Bq_WVtAgqHBf9fOrEjFYmZcuwa1DJ1LzNeAUUsoBjNM/edit?usp=sharing</p> <p>IMPORTANT FINE PRINT</p> 
<p>3. Open the elevation plans. <i>Refer to the image to show you what to look for.</i></p>	<p>*COMES FULL ASSEMBLED Requires installation and modifying finishing trim pieces to fit.</p>  

4. **Open the elevation plans.** The elevation has these numbers overlaid on the cabinets, panels, and accessory pieces. Refer to the image to show you what to look for.



5. **Once you open both, look for the numbers on the order worksheet.** This number corresponds to the line number in your order worksheet. Refer to the image to show you what to look for.

81	33"		926	1019	936	936			BSU33
82	36"		969	1065	969	969			BSU36
83	15"		1152	1268	1226	1259	1174	1198	WBMT15-2D
84	18"	1	1335	1468	1409	1441	1356	1372	WBMT18-2D
85	21"		1353	1488	1427	1459	1374	1390	WBMT21-2D
86	9"		721	794	773	795	731	757	BRPO9
87	12"		858	944	932	953	879	907	BRPO12
88	12" Right		505	556	579	600	526	571	4 (see addendum)
89	12" Left		505	556	579	600	526	571	5 (see addendum)
90	24"		590	648	684	717	622	682	B24D1
91	27"		632	696	737	769	664	732	B27D1
92	30"		673	741	791	832	717	793	B30D1
93	33"		673	741	791	832	717	793	B33D1
94	36"		706	776	821	864	747	823	B36D1
95	24"		791	869	917	959	832	913	B24D2
96	27"		832	915	969	1021	885	973	B27D2
97	30"		895	984	1043	1095	937	1043	B30D2
98	33"		906	997	1053	1107	948	1054	B33D2
99	36"		948	1043	1107	1159	1000	1104	B36D2
100	24"		1107	1216	1233	1275	1148	1214	20 (see addendum)
101	27"		1179	1297	1315	1369	1232	1303	21 (see addendum)
102	30"		1242	1366	1389	1441	1285	1373	22 (see addendum)
103	33"		1285	1413	1432	1485	1326	1415	23 (see addendum)
104	36"		1326	1459	1485	1538	1379	1465	24 (see addendum)
105	12"		684	753	800	843	727	803	B12D3
106	15"		737	811	864	895	780	852	B15D3
107	18"		780	857	906	948	821	903	B18D3
108	21"		821	903	959	1011	874	963	B21D3
109	24"	1	874	961	1021	1064	926	1014	B24D3
110	27"		926	1019	1085	1138	980	1084	B27D3
111	30"		1007	1216	1296	1360	1169	1295	BP30

6. **Follow the line to the last column for the cabinet number which looks like this.** That number corresponds to the identification sticker on the cabinet, generally located on the back of the box as well as on the packing/load list. Refer to the image to show you what to look for.

83	15"		1152	1268	1226	1259	1174	1198	WBMT15-2D
84	18"	1	1335	1468	1409	1441	1356	1372	WBMT18-2D
85	21"		1353	1488	1427	1459	1374	1390	WBMT21-2D
86	9"		721	794	773	795	731	757	BRPO9
87	12"		858	944	932	953	879	907	BRPO12
88	12" Right		505	556	579	600	526	571	4 (see addendum)
89	12" Left		505	556	579	600	526	571	5 (see addendum)
90	24"		590	648	684	717	622	682	B24D1
91	27"		632	696	737	769	664	732	B27D1
92	30"		673	741	791	832	717	793	B30D1
93	33"		673	741	791	832	717	793	B33D1
94	36"		706	776	821	864	747	823	B36D1
95	24"		791	869	917	959	832	913	B24D2
96	27"		832	915	969	1021	885	973	B27D2
97	30"		895	984	1043	1095	937	1043	B30D2
98	33"		906	997	1053	1107	948	1054	B33D2
99	36"		948	1043	1107	1159	1000	1104	B36D2
100	24"		1107	1216	1233	1275	1148	1214	20 (see addendum)
101	27"		1179	1297	1315	1369	1232	1303	21 (see addendum)
102	30"		1242	1366	1389	1441	1285	1373	22 (see addendum)
103	33"		1285	1413	1432	1485	1326	1415	23 (see addendum)
104	36"		1326	1459	1485	1538	1379	1465	24 (see addendum)
105	12"		684	753	800	843	727	803	B12D3
106	15"		737	811	864	895	780	852	B15D3
107	18"		780	857	906	948	821	903	B18D3
108	21"		821	903	959	1011	874	963	B21D3
109	24"	1	874	961	1021	1064	926	1014	B24D3
110	27"		926	1019	1085	1138	980	1084	B27D3
111	30"		1007	1216	1296	1360	1169	1295	BP30
112	36"		1369	1286	1360	1422	1233	1354	BP36
113	36"		1169	1286	1360	1422	1233	1354	BP36 MOD: TOP DRAWER FIXED
114	12"		706	776	821	864	747	823	B12D4
115	15"		747	822	874	917	791	874	B15D4
116	18"		791	869	926	969	843	923	B18D4
117	21"		843	927	980	1033	895	983	B21D4

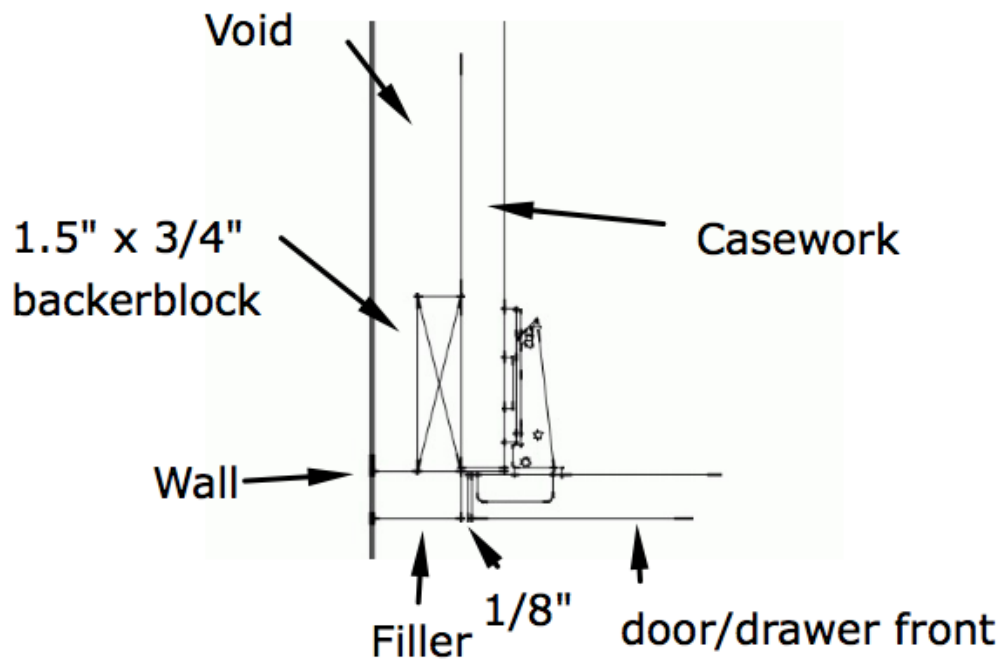
SPECIFIC MOD FEATURES INSTALLATION

Please print this for your installer.

Filler Molding

1. The filler package comes with 2 pieces. The 1.5" wide piece is the backer block and is attached to the cabinet flush with the cabinet box. The 4" piece is the filler.
2. It should be scribed to fit between the cabinet and the wall. It is installed in front of the backer block flush with the doors. Leave a $\frac{1}{8}$ " reveal between the door and the filler (front piece) to allow the door to open and to match all of the other reveals between doors.

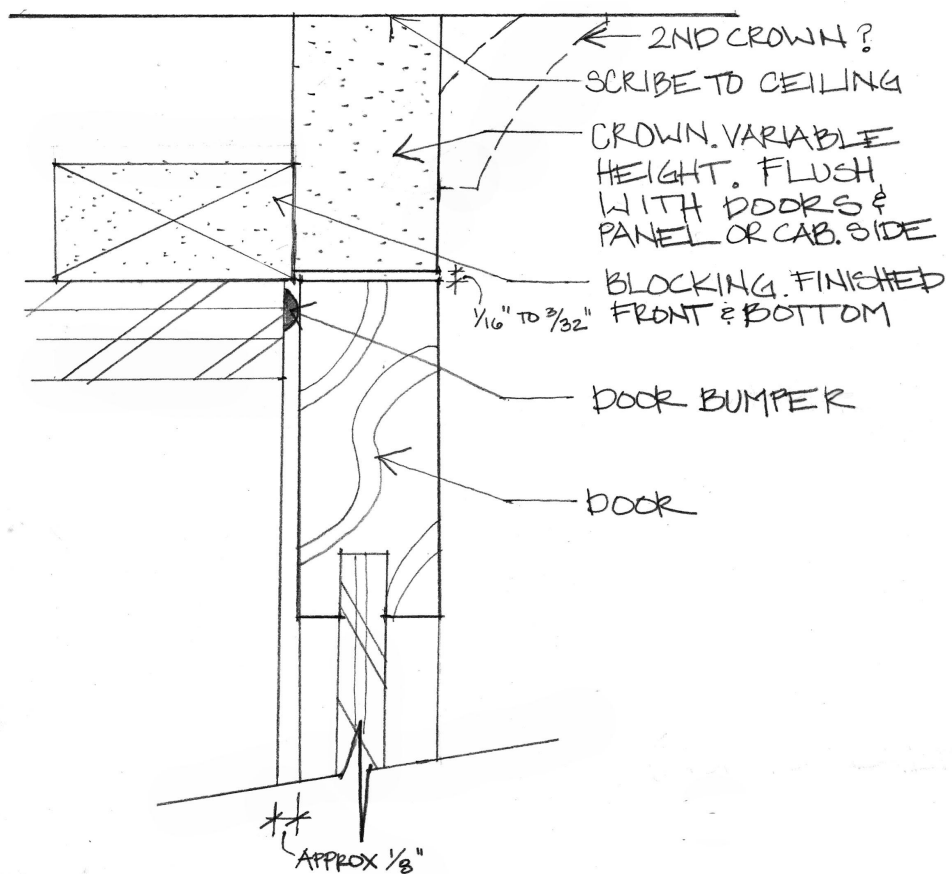
Illustration 1. Filler Molding Top View



Crown Molding

1. The crown molding kit comes in 2 pieces.
2. The filler package comes with 2 pieces. The 1.5" wide piece is the backer block and is attached to the cabinet flush with the cabinet box. The 6" piece is the crown molding. It is installed in front of the backer block flush with the doors. Leave a $\frac{1}{8}$ " reveal between the door and the filler (front piece) to allow the door to open and to match all of the other reveals between doors.

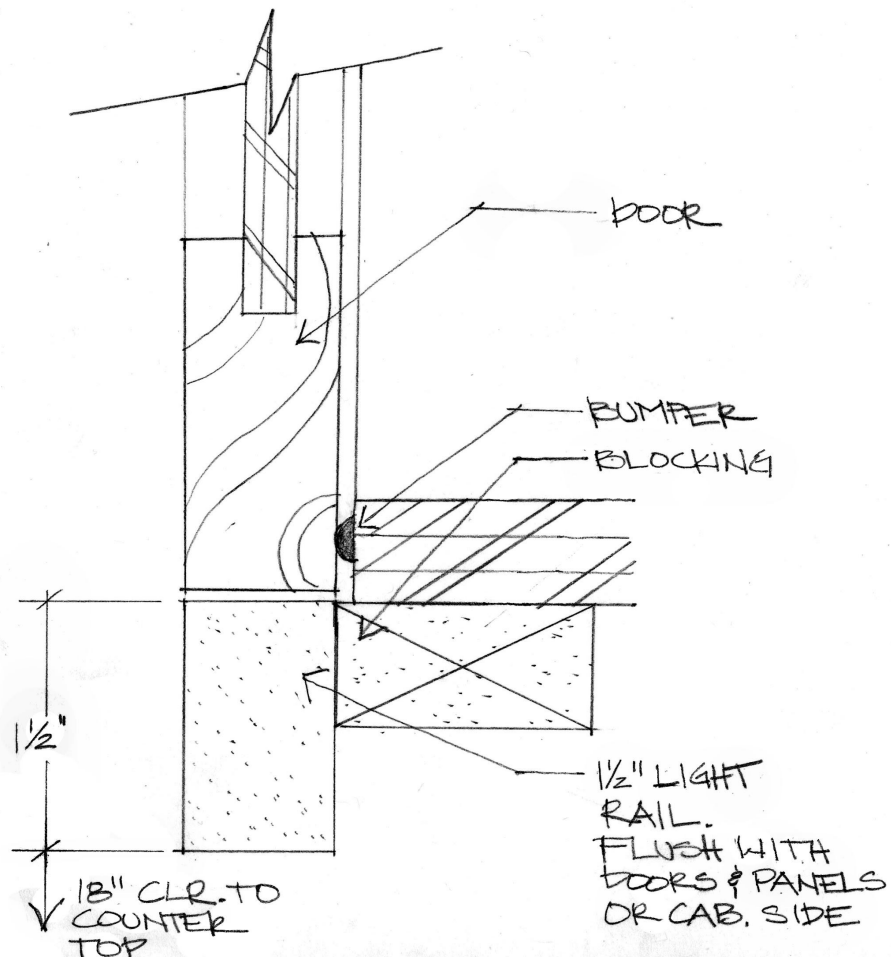
Illustration 2. Flush crown Side View



Light Rail

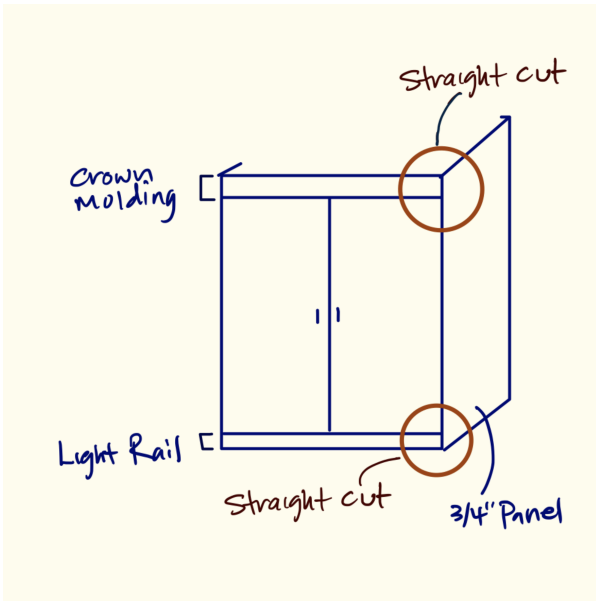

1. The light molding kit comes with 2 pieces.
2. The 1.5" wide piece is the backer block and is attached to the cabinet flush with the cabinet box. The 1.5" piece is the filler. It should be scribed to fit the opening between the cabinet and the wall. It is installed in front of the backer block flush with the doors. Leave a $\frac{1}{8}$ " reveal between the door and the filler (front piece) to allow the door to open and to match all of the other reveals between doors.

Illustration 3. Flush Light Rail Side View



Light Rail, Crown Molding Meets Panel Detail

1. For a modern look, we designed Mod Cabinetry to have the light rail and crown molding installed flush with doors and terminate with a straight cut into side panel. Please do not recess or create a mitered corner without the client's approval as this will not only be more work, it also yields a traditional look.

Simple Sketch of	Example Install of flush light rail that terminates into side panel
 <p>A hand-drawn sketch of a cabinet corner. The sketch shows a top-down view of a cabinet door and a side panel. The top edge of the door is labeled "Crown molding". The bottom edge of the door is labeled "Light Rail". The side panel is labeled "3/4\" Panel". Two corners where the door meets the side panel are circled in orange and labeled "Straight cut".</p>	 <p>A photograph of a dark-colored cabinet corner. The image shows a top cabinet door and a bottom cabinet drawer. The top edge of the door is flush with the side panel, and the bottom edge of the drawer is also flush with the side panel. The side panel is a dark, solid color, and the door and drawer are a slightly lighter shade of the same color. The lighting is soft, highlighting the clean lines and flush fit of the installation.</p>

Finished Side Panel-Base

2. Applied to exposed sides of cabinets.
3. Areas included but are not limited to are final cabinet runs on the upper, base or tall cabinets. Sides of refrigerators, a dishwasher at the end of a run, uppers on either side of a hood, stacking uppers near a set of shorter uppers etc.

Illustration 4. Flush Finished Side Panel Top View

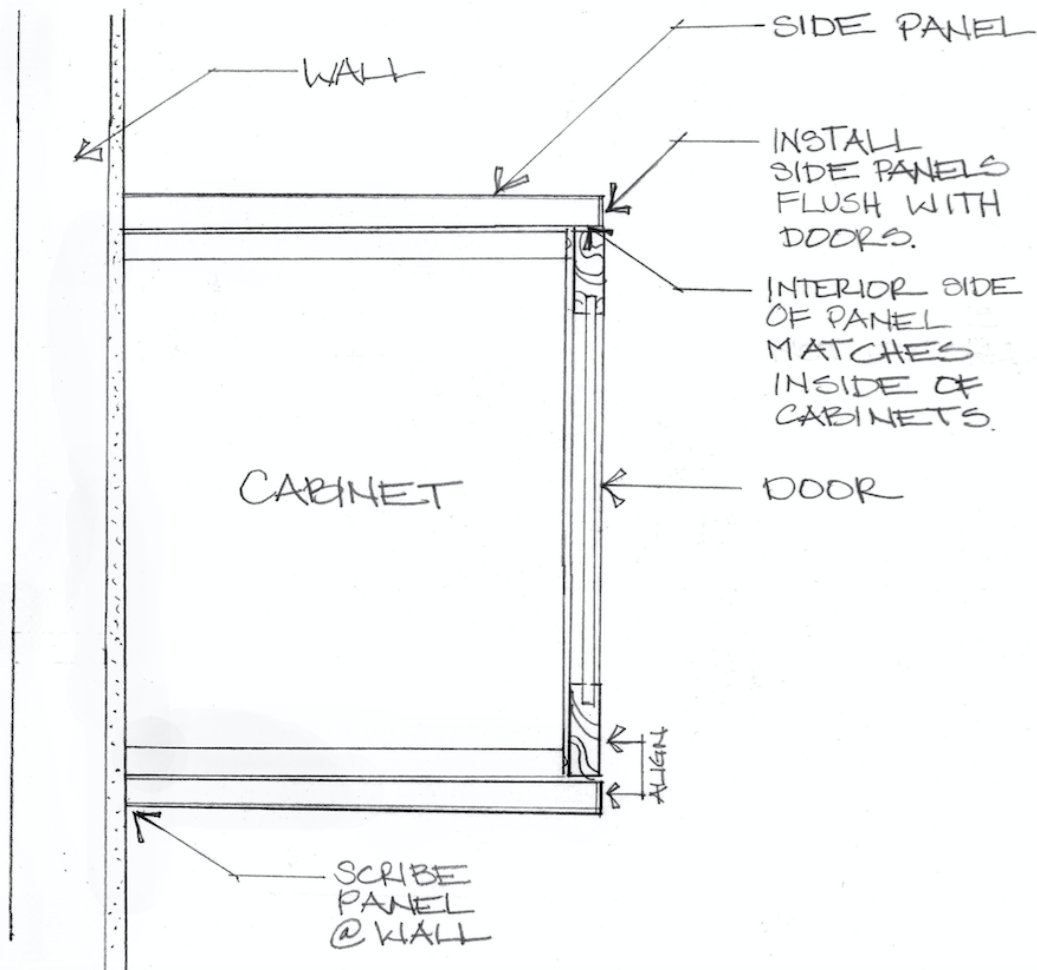


Illustration 5. Flush Finished Side Panel Refrigerator/ Pantry Side View

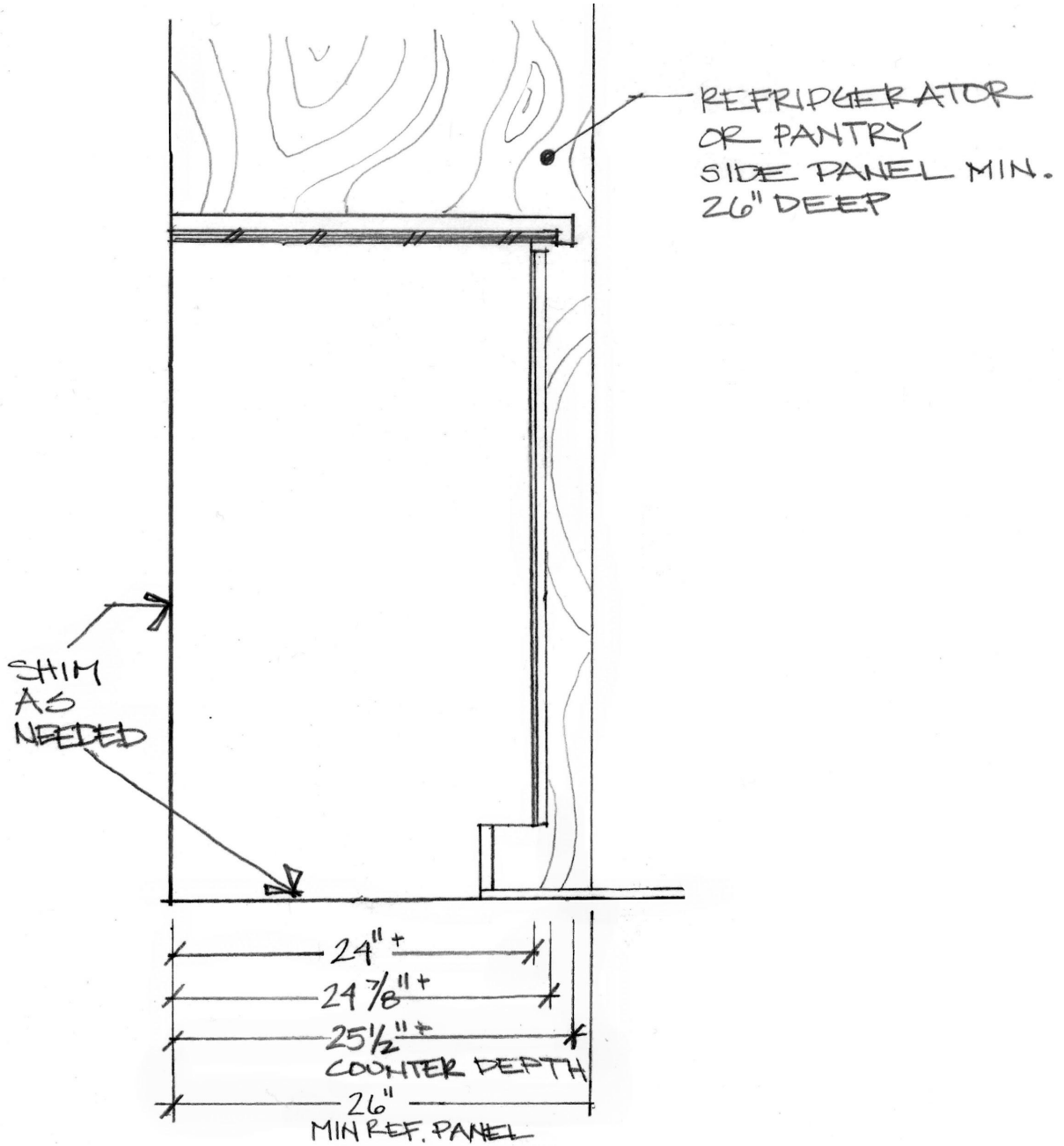
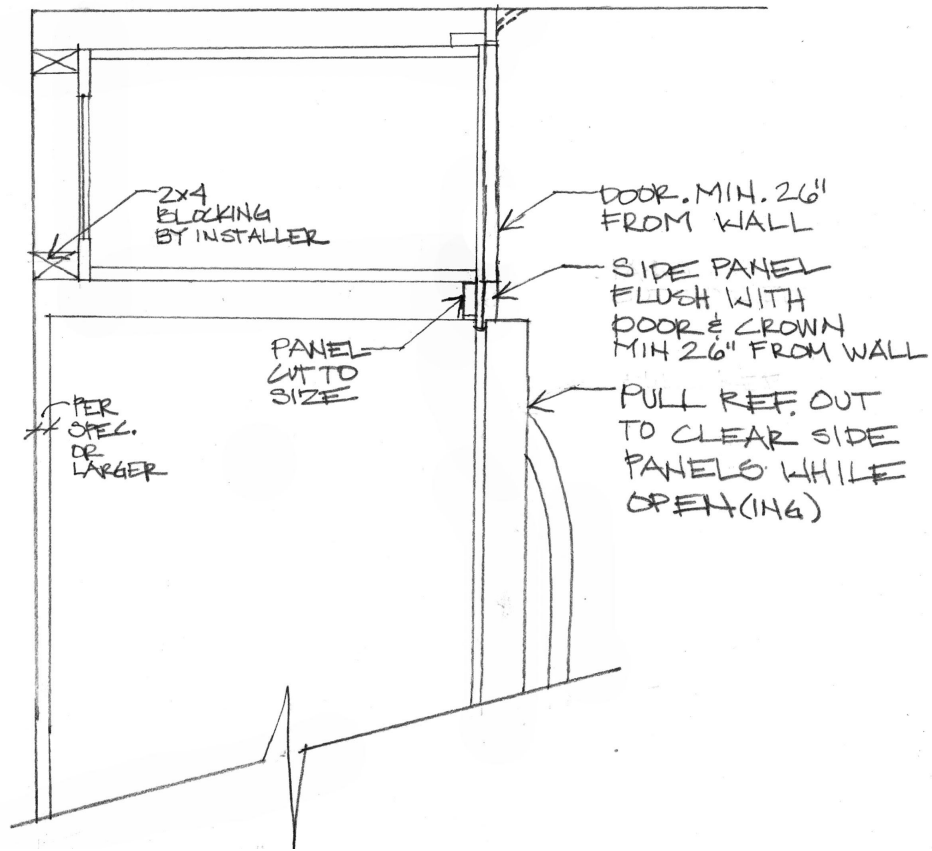


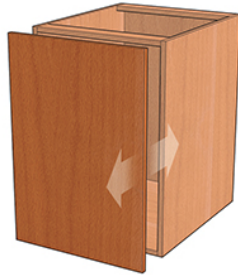
Illustration 6. Cabinet Above Refrigerator and Side Panel/Door Configuration



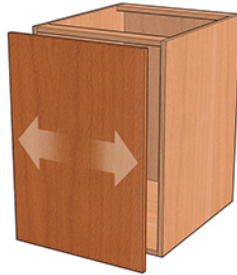
Alignment

All European Frameless Cabinets require the door and drawer boxes to be adjusted to fine tune alignment after installation. Adjusting doors and drawers can include lateral (side-to-side) and vertical adjustment and well as in and out adjustments to achieve precision alignment.

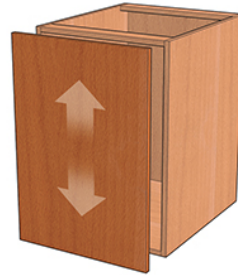
In & Out Adjustment



Side-to-Side Adjustment

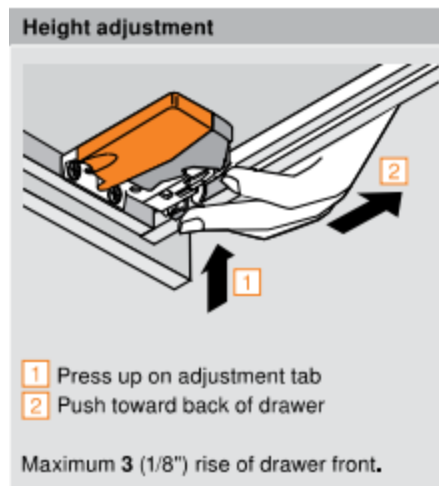


Up & Down Adjustment

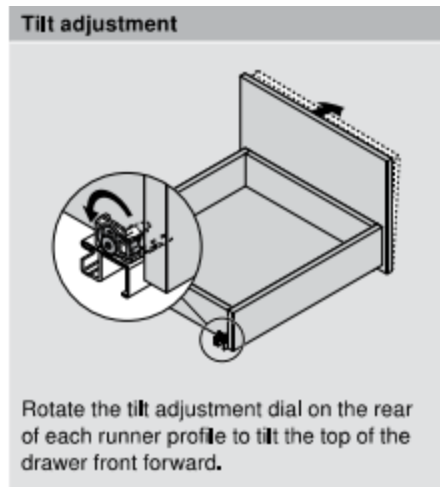


Adjust Wood Drawer Fronts

1. You want approximately $\frac{1}{8}$ " reveal (or gap) between drawer fronts.
2. Use the same reveal size throughout. We suggest using a calibrated shim to help you achieve consistent spacing.
3. Blum uses tool-free tilt adjustments.
4. Height Adjustment: The orange locking device located on the bottom of the drawer box has small tabs on both the right and left side which will independently lower each side of the drawer box up or down.



5. Depth Adjustment

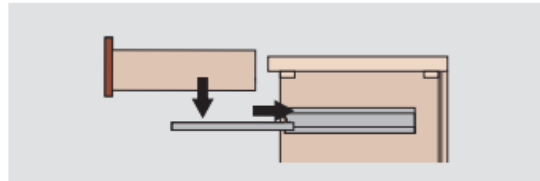


6. For finer adjustment, you can 'micro adjust' the drawer front by loosening the drawer front mounting screws and tapping to a level position. Retighten.
7. Removing and inserting drawer box from the Blum glides

Step 5

Insert drawers

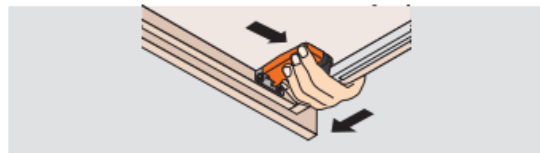
Extend the runners fully. Place the drawer on the runners and close. The locking devices automatically engage with the runners. Make adjustments if necessary.

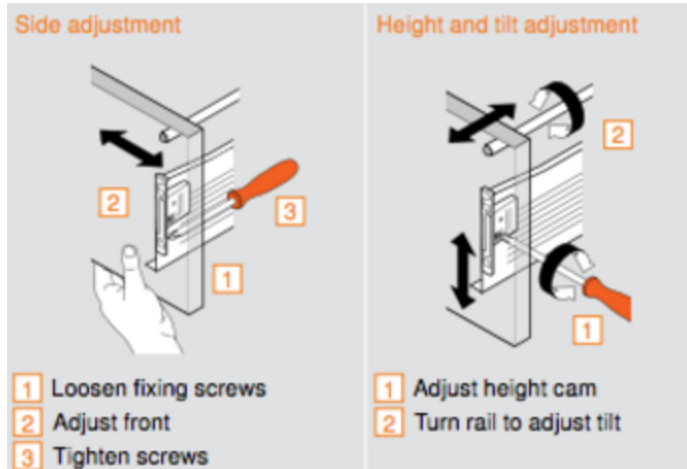


Step 6

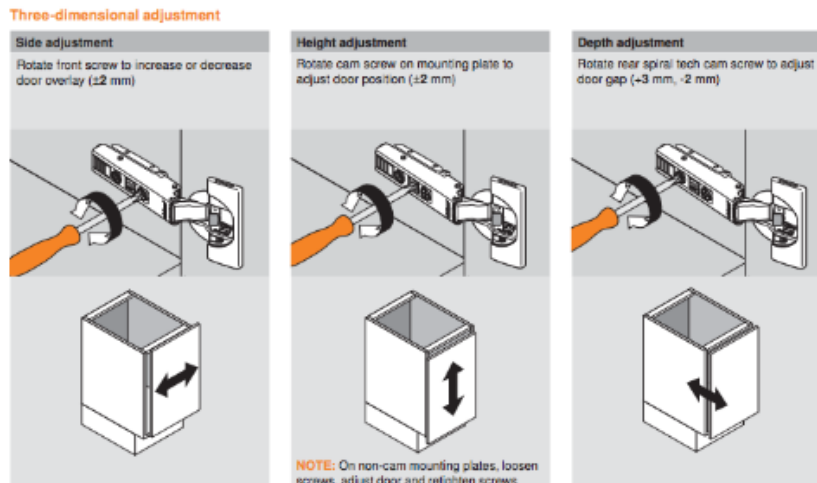
Drawer removal

Squeeze orange handles on locking devices and pull drawer straight out and up.

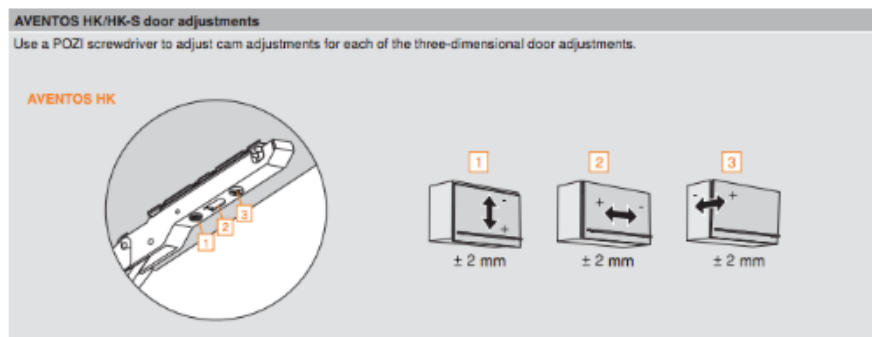




Adjust Doors



Adjust Lift-Ups



REFERENCE BLUM.COM FOR GREATER DETAIL IF REQUIRED



CABINET CARE

- Mod Cabinetry's tough waterborne finish withstands the normal daily use in today's homes.
- Treat your cabinets as you would any fine wood furniture. Wipe spills promptly and do not leave wet items against the wood.
- Clean your cabinets occasionally by dampening a soft cloth (not paper towels) with a mild non-detergent soap. Wipe the surface then rinse with a clean damp cloth and dry promptly.
- Wax or polish is unnecessary and will build up, attracting dirt and grease and dulling the finish.
- Small nicks or scratches should be repaired using fill sticks or touch up pens available at your local home improvement or specialty paint center.
- Mod Cabinetry's waterborne finish is applied in a highly controlled environment designed to achieve a consistent result every time. While stains and paints are available for purchase, achieving an exact match to your cabinetry cannot be guaranteed.

Thermofoil Cabinetry

- Thermofoil is a very durable PVC material designed to provide unique colors, textures and patterns unavailable with traditional wood cabinetry.
- Clean thermofoil cabinets occasionally by dampening a soft cloth (not paper towels) with a mild non-detergent soap.
- Wipe the surface then rinse with a clean damp cloth and dry promptly.
- As the name indicates, thermofoil uses heat-activated adhesives to bond the PVC to the core material. This adhesive may be reactivated by excessive heat generated from ovens, ranges, dishwashers and countertop appliances such as toasters, ovens, grills or coffee makers and cause the thermofoil to detach from the core.
- Mod Cabinetry provides heat shields with the purchase of a kitchen sink base and requires their use to protect thermofoil from excessive heat generated from ovens, ranges and dishwashers.
- Pull countertop appliances such as toasters, ovens, grills or coffee makers out from under thermofoil cabinetry before use and do not allow them to remain on for extended periods.
- Damage caused by excessive heat is not covered under warranty.



General Notes

- Do not use paper towels to clean or wipe any cabinetry. Paper towels are surprisingly abrasive and may scratch finishes.
- Do not use any cleaners containing alcohol, solvents or abrasives.
- When cleaning cabinets with glass doors, spray glass cleaner onto cleaning cloth, not directly onto glass. Overspray from glass cleaner may damage adjacent finish.



WARRANTY TERMS AND PROCEDURES

Product Warranty

This warranty applies to cabinetry that you have enjoyed for years.

Mod Cabinetry is partner manufacturer is Executive Cabinetry. Mod Cabinetry and its manufacturers warrant products to be free from defects in material and workmanship for as long as they are owned by the original homeowner. Mod Cabinetry and its manufacturers may elect to repair or replace any product covered by this warranty. We also reserve the right to suggest that your installer use the the provided Touch-up kit and/or the optional Finishing Kit for minor issues that are field repairable.

This warranty does not cover the following: costs of removing warranted material or the installation of replacement material, items that have been improperly stored or improperly installed, natural variations and aging inherent in wood, normal wear and tear, or damage/defects caused by misuse, abuse, negligence, or modification in any way. This warranty does not apply to unfinished products.

Mod Cabinetry and its manufacturers reserve the right to inspect claimed defective products. No returns, replacements or repairs may be made without prior written consent. Some replacement parts may vary from those originally supplied and are subject to availability. This warranty is the sole warranty of Mod Cabinetry and its manufacturers, and in lieu of all other warranties, expressed or implied, including any implied warranty of merchantability or fitness for a particular use. We do not assume any other liability in connection with the sale of our products.

Doors: The purchaser agrees to allow doors that are warped 1/4" or less to hang for one year before replacement is requested to allow doors to return to a normal flat position once acclimated to temperature and humidity.

The purchaser agrees to ensure cabinetry has been properly installed prior to requesting a replacement door. Deviations from standard door construction, including removal of dividing rails or doors greater than the maximum recommended sizes, are not covered against warpage.

Thermofoil: This warranty does not apply to thermofoil products installed adjacent to heat-generating appliances or fixtures without heat shields. Thermofoil includes a two year warranty on the following finish options: Antique, Matte Black, White,



Brushed Aluminum, and Shark Gray. All other thermofoils include a five year warranty.

To file a warranty claim, contact Mod Cabinetry. A copy of the original purchaser's dated receipt must be submitted with all claims.

This warranty extends only to the original homeowner and is nontransferable. Some states do not allow the exclusion or limitation of implied warranties or of incidental and consequential damages, therefore, this limitation or exclusion may not apply. In such cases, the duration of any implied warranty shall be the same as that of the expressed warranty as stated herein.

Damage Warranty

This warranty applies to cabinetry that is received damaged by the shipper or believed to be manufactured incorrectly.

Mod Cabinetry reserves the right to either replace or repair any cabinet(s) that has been damaged during shipment or that has not been manufactured correctly. If you have received something you believe is damaged, email Mod Cabinetry immediately with photos of the item. We will work with you to find a solution, or repair/replace the product.

Additionally, if you believe something has not been manufactured correctly, email Mod Cabinetry immediately with photos of the item in question. Often times something may appear incorrect but is actually detailed differently than expected.

Do:

1. If you see minor damage, note it on the delivery paperwork.
2. Written confirmation of any damage must be noted on the delivery receipt in order for a claim to be considered.
3. Will Call-Should you notice any damage to the exterior of the packages please make a note on the paperwork BEFORE YOU LOAD ON YOUR TRUCK.
4. Curbside-Should you notice any damage to the exterior of the packages please make a note on the paperwork BEFORE THE DRIVERS LEAVE. If you do not do this you are responsible for any damage found later.
5. Note ambiguous package damage as 'possible concealed damage'. The shipping fee includes two weeks of free storage. Should you need more time please inquire about storage pricing.
6. Report concealed damage claims within fourteen (14) days of delivery.



7. Describe the damage. A photo of the damaged product must accompany the claim.

Don't:

1. Don't worry. While shipping damage and manufacturer errors can happen, we have a process to resolve them. We will work with you and the installer to resolve the issue as quickly as possible.
2. Don't install damaged cabinetry without a reply from us first. If we need to replace a cabinet and you've already installed it, we do not pay to remove it.
3. Don't try to repair it yourself and bill us later. Communicate with us first and send photos with a description of the damage or error so we can work together and resolve the issue.

Notes on Warranty:

1. Warranty orders are only for products previously produced by Mod Cabinetry. Changes or substitutions from originally ordered products are not accepted.
2. Mod Cabinetry may require the manufacturer's representative to inspect the warranted item(s) and also may require the item(s) to be returned for quality assurance inspection.

If you believe you have a warranty issue please contact us at hello@modcabinetry.com