



MOD AT HOME

Installation, Cabinet Care and Warranty Information

GENERAL INSTALLATION

Please print this packet for your installer.

Professional

Mod Cabinetry uses the same general installation and best practices used for European Frameless Cabinets. This type of cabinet construction requires finesse and skill above that which is needed to install American Framed Cabinets. Added details include precise leveling (due to an all flush installation) and subsequent adjustments after installation, such as adjusting door and drawer depth, levels and drawers fronts. Be sure that you work only use a professional installer with experience installing European Frameless Cabinets. When you interview an installer show them this packet and confirm they are familiar with the basics such as setting cabinetry, leveling, shimming, scribing, adjusting drawers and doors on frameless cabinets, installing applied end panels as well as other general cabinetry installation techniques.



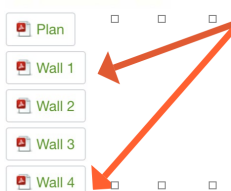
DIY

We posted a video and general installation instructions on our website for DIY installers. This information comes from reputable sources, yet we cannot certify its completeness

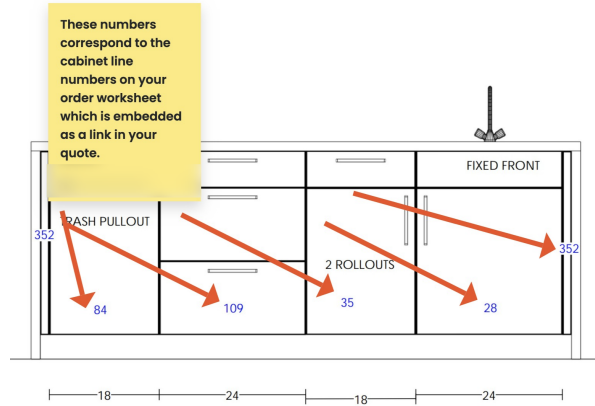
<https://www.modcabinetry.com/more-info/how-to-install/>. We do not offer installation support beyond what we have published online and we cannot be held responsible for the effects of subpar installation quality and technique.

HOW TO MAP YOUR CABINETS TO YOUR ORDER FORM

We will show you step by step how to map your cabinets at the job site with the cabinets in the layout and order worksheet

<p>1. Open up your quote</p>	
<p>2. Open the order worksheet. If you have two-tone or several orders you will see 2 or more links, one for each order. <i>Refer to the image to show you what to look for.</i></p>	<p>KITCHEN NOTES V3 Kitchen</p> <hr/> <p><small>Naturals by Mod Cabinetry</small> Naturals by Mod Cabinetry PRICE AND DESIGN</p> <p>YOUR CUSTOM QUALITY Full Construction Specs Videos and Photos: https://modcab.in/3qMCoTf Standard Sizing Catalog: https://modcab.in/3FPwkxv Cabinet Construction: European Frameless Casework: 3/4" Maple Plywood Drawer Glides and Box: Blum full extension slide undermount w/ soft-closing and 5/8" Solid wood dovetail drawer Healthy Home: CARB Phase 2 Certified Country of Origin: All USA sourced and made</p> <p>Price Level Naturals 2 Naturals 2</p> <p>YOUR ORDER INCLUDES CABINETS AS SHOWN IN ORDER WORKSHEET LINKED HERE. PLEASE REVIEW https://docs.google.com/spreadsheets/d/1YjGq16cPL49pFfejabyItOyCibx8VZyAGGqVomksc4/edit?usp=sharing https://docs.google.com/spreadsheets/d/1Bq_WVtAgqHBf9fOrEjFYmZcuwa1DJ1LzNeAUUsoBjNM/edit?usp=sharing</p> <p>IMPORTANT FINE PRINT</p> 
<p>3. Open the elevation plans. <i>Refer to the image to show you what to look for.</i></p>	<p>*COMES FULL ASSEMBLED Requires installation and modifying finishing trim pieces to fit.</p>  

4. **Open the elevation plans.** The elevation has these numbers overlaid on the cabinets, panels, and accessory pieces. Refer to the image to show you what to look for.



5. **Once you open both, look for the numbers on the order worksheet.** This number corresponds to the line number in your order worksheet. Refer to the image to show you what to look for.

81	33"		926	1019	926	926	BSU33		
82	36"		969	1065	969	969	BSU36		
83	15"		1152	1268	1226	1259	1174	1198	WBM715-2D
84	15"	1	1335	1468	1427	1459	1374	1390	WBM715-2D
85	6"		1353	1488	1427	1459	1374	1390	WBM715-2D
86	9"		721	794	773	795	731	757	BRPO9
87	12"		858	944	932	953	879	907	BRPO12
88	12" Right		505	556	579	600	526	571	4 (see addendum)
89	12" Left		505	556	579	600	526	571	5 (see addendum)
90	24"		590	648	684	717	622	682	B24D1
91	27"		632	696	737	769	664	732	B27D1
92	30"		673	741	791	832	717	793	B30D1
93	33"		673	741	791	832	717	793	B33D1
94	36"		706	776	821	864	747	823	B36D1
95	24"		791	869	917	959	832	913	B24D2
96	27"		832	915	969	1021	885	973	B27D2
97	30"		895	984	1043	1095	937	1043	B30D2
98	33"		906	997	1053	1107	948	1054	B33D2
99	36"		948	1043	1107	1159	1000	1104	B36D2
100	24"		1107	1216	1233	1275	1148	1214	20 (see addendum)
101	27"		1179	1297	1315	1369	1232	1303	21 (see addendum)
102	30"		1242	1366	1389	1441	1285	1373	22 (see addendum)
103	33"		1285	1413	1432	1485	1326	1415	23 (see addendum)
104	36"		1326	1459	1485	1538	1379	1465	24 (see addendum)
105	12"		684	753	800	843	727	803	B12D3
106	15"		737	811	864	895	780	852	B15D3
107	18"		780	857	906	948	821	903	B18D3
108	21"		821	903	959	1011	874	963	B21D3
109	24"	1	874	963	1021	1064	933	1014	B24D3
110	27"		926	1019	1085	1138	980	1084	B27D3
111	30"		1107	1216	1236	1296	1169	1235	BPP30

6. **Follow the line to the last column for the cabinet number which looks like this.** That number corresponds to the identification sticker on the cabinet, generally located on the back of the box as well as on the packing/load list. Refer to the image to show you what to look for.

83	15"		1152	1268	1226	1259	1174	1198	WBM715-2D
84	15"	1	1335	1468	1427	1459	1374	1390	WBM715-2D
85	21"		1353	1488	1427	1459	1374	1390	WB71-2D
86	9"		721	794	773	795	731	757	BRPO9
87	12"		858	944	932	953	879	907	BRPO12
88	12" Right		505	556	579	600	526	571	4 (see addendum)
89	12" Left		505	556	579	600	526	571	5 (see addendum)
90	24"		590	648	684	717	622	682	B24D1
91	27"		632	696	737	769	664	732	B27D1
92	30"		673	741	791	832	717	793	B30D1
93	33"		673	741	791	832	717	793	B33D1
94	36"		706	776	821	864	747	823	B36D1
95	24"		791	869	917	959	832	913	B24D2
96	27"		832	915	969	1021	885	973	B27D2
97	30"		895	984	1043	1095	937	1043	B30D2
98	33"		906	997	1053	1107	948	1054	B33D2
99	36"		948	1043	1107	1159	1000	1104	B36D2
100	24"		1107	1216	1233	1275	1148	1214	20 (see addendum)
101	27"		1179	1297	1315	1369	1232	1303	21 (see addendum)
102	30"		1242	1366	1389	1441	1285	1373	22 (see addendum)
103	33"		1285	1413	1432	1485	1326	1415	23 (see addendum)
104	36"		1326	1459	1485	1538	1379	1465	24 (see addendum)
105	12"		684	753	800	843	727	803	B12D3
106	15"		737	811	864	895	780	852	B15D3
107	18"		780	857	906	948	821	903	B18D3
108	21"		821	903	959	1011	874	963	B21D3
109	24"	1	874	963	1021	1064	933	1014	B24D3
110	27"		926	1019	1085	1138	980	1084	B27D3
111	30"		1107	1216	1236	1296	1169	1235	BPP30
112	36"		1169	1286	1360	1422	1233	1354	BPP36
113	36"		1169	1286	1360	1422	1233	1354	BPP36 MOD: TOP DRAWER FIXED
114	12"		706	776	821	864	747	823	B12D4
115	15"		747	822	874	917	791	874	B15D4
116	18"		791	869	926	969	843	923	B18D4
117	21"		843	927	980	1033	895	983	B21D4

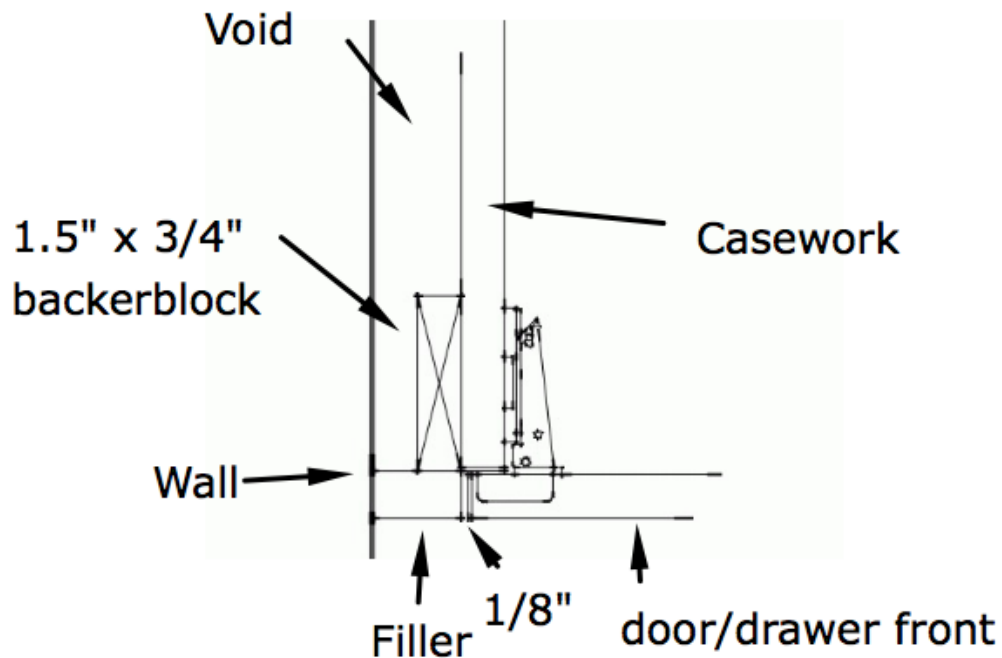
SPECIFIC MOD FEATURES INSTALLATION

Please print this for your installer.

Filler Molding

1. The filler package comes with 2 pieces. The width of the filler and the backerblock are the same but the height is slightly less on the backer block. The backer block is attached to the cabinet flush with the cabinet box. The 3" or 6" piece is the filler.
2. It should be scribed to fit between the cabinet and the wall. It is installed in front of the backer block flush with the doors. Leave a 1/16" reveal between the door and the filler (front piece) to allow the door to open and to match all of the other reveals between doors.

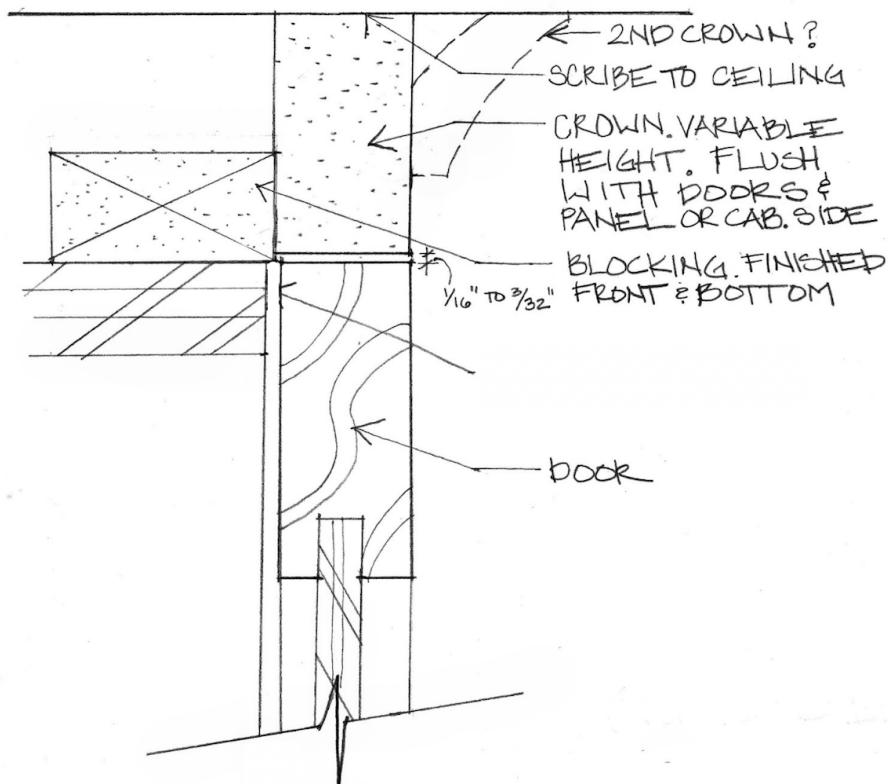
Illustration 1. Filler Molding Top View



Crown Molding

1. The crown molding kit comes in 2 pieces.
2. The molding package comes with 2 6" x 96" pieces. One of the two pieces will serve as the backer block and is attached to the cabinet flush with the cabinet box. The other 6" piece is the crown molding. It is installed in front of the backer block flush with the doors. Leave a 1/16" reveal between the door and the filler (front piece) to allow the door to open and to match all of the other reveals between doors.

Illustration 2. Flush crown Side View



Finished Side Panel-Base

1. When installing panels, install the smooth side inward and the side the protective film or matte outward as this is the exterior finish. The protective layer is to be removed after all trade work is completed.
1. Applied to exposed sides of cabinets.
2. Areas included but are not limited to are final cabinet runs on the upper, base or tall cabinets. Sides of refrigerators, a dishwasher at the end of a run, uppers on either side of a hood, stacking uppers near a set of shorter uppers etc.

Illustration 3. Flush Finished Side Panel Top View

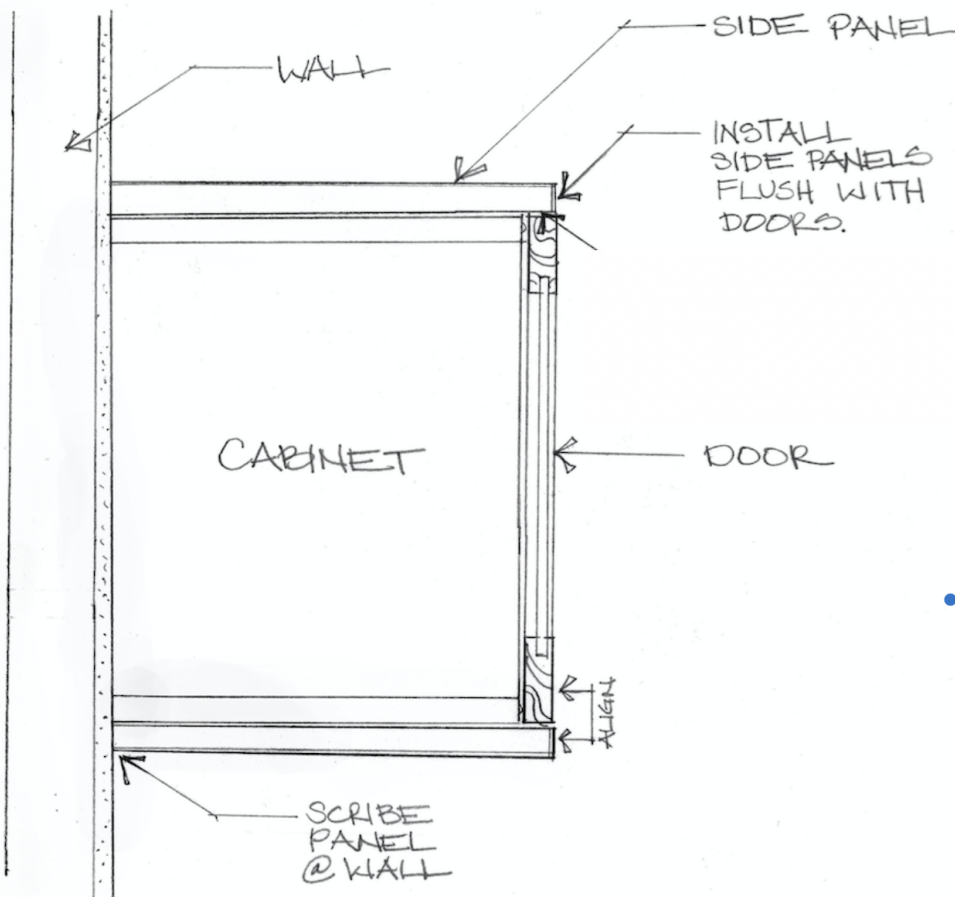


Illustration 4. Flush Finished Side Panel Refrigerator/ Pantry Side View

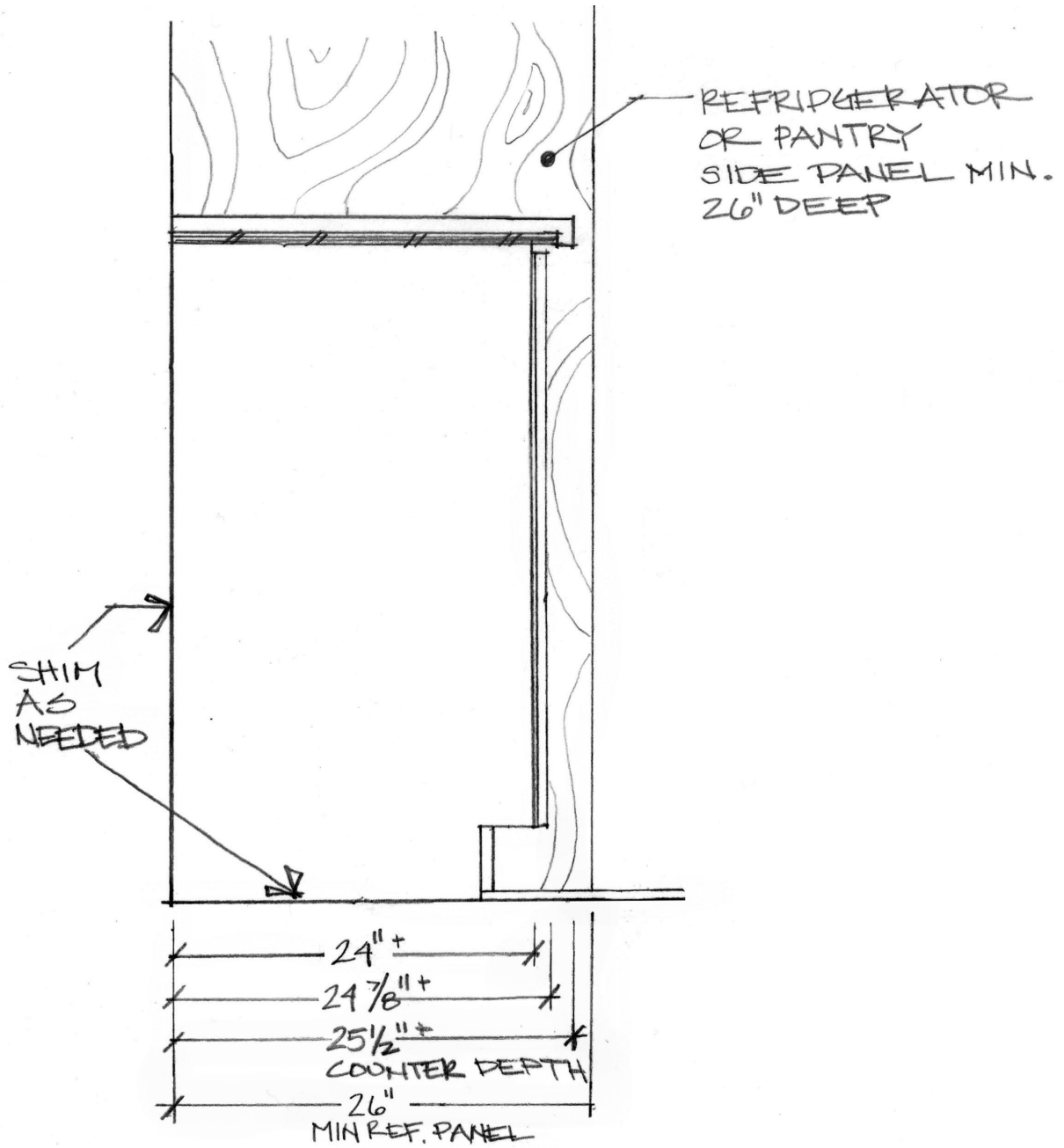
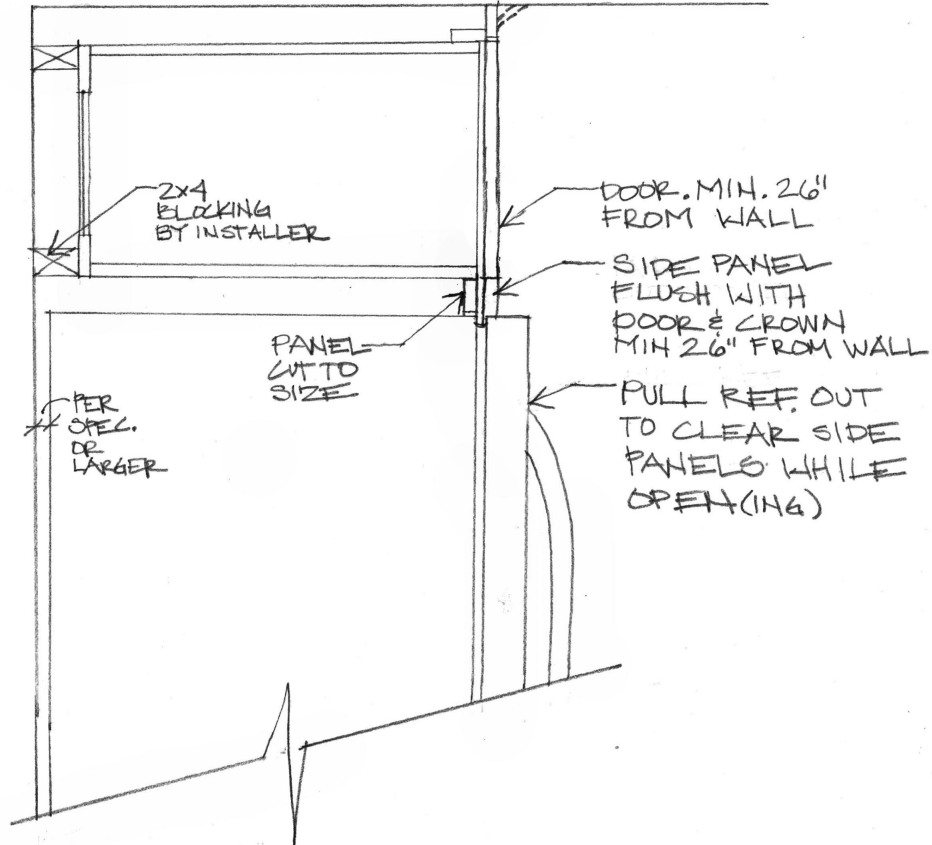


Illustration 5. Cabinet Above Refrigerator and Side Panel/Door Configuration



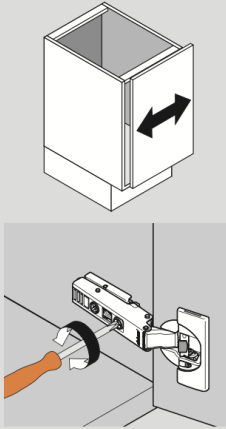
Door Alignment

All European Frameless Cabinets require the door and drawer boxes to be adjusted to fine tune alignment after installation. Adjusting doors and drawers can include lateral (side-to-side) and vertical adjustment and well as in and out adjustments to achieve precision alignment. We outfit the cabinets with Blum hinges, a preferred choice by most better end manufactures and custom cabinetry makers. Door hinges are Clip 107 Blumotion. See Blum.com under “Downloads and Video”; find “Hinge Systems” and click on “Clip”.

Three-dimensional adjustment

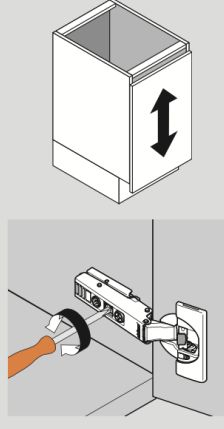
Side adjustment

Rotate front screw to increase or decrease door overlay (± 2 mm).



Height adjustment

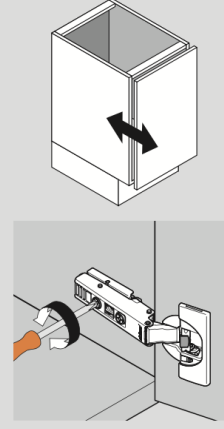
Rotate cam screw on mounting plate to adjust door position (± 2 mm).



On non-cam mounting plates, loosen screws, adjust door and retighten screws.

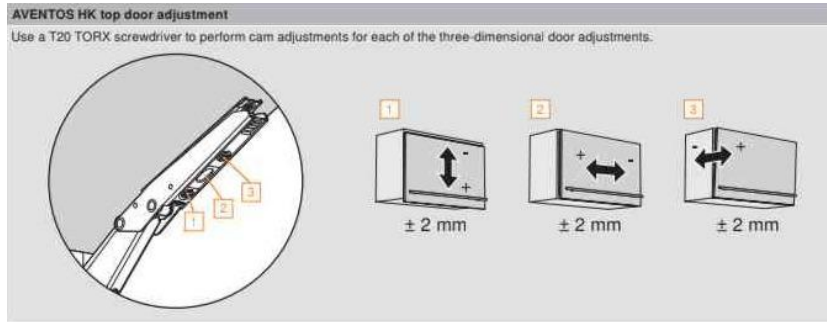
Depth adjustment

Rotate rear spiral tech cam screw to adjust door gap (+3 mm, -2 mm).



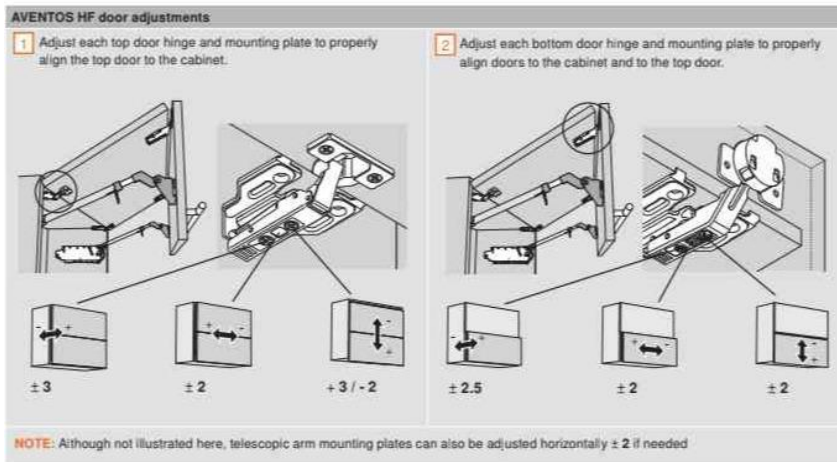
Adjust Lift-Up Doors

Lift-up door hinges are Blumotion AVENTOS HK top, the stay lift system. See Blum.com under “Downloads and Video”; find “Lift Systems” and click on “AVENTOS HK top”.

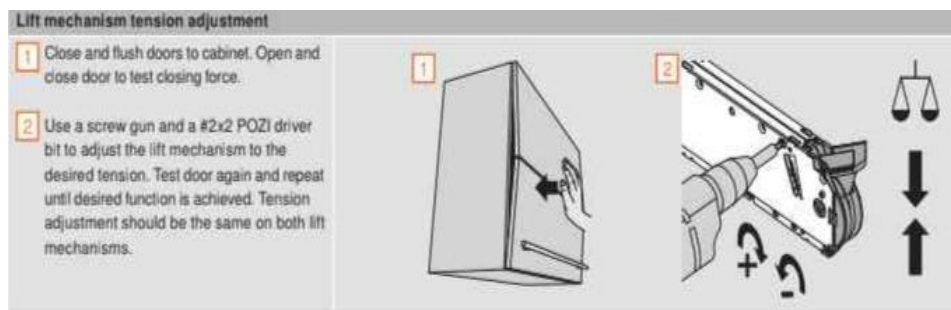


Adjust Bifold Doors

Bifold door hinges are Blumotion AVENTOS HF. This is a two part system where the doors fold together in the center when opening. See Blum.com under “Downloads and Video”; find “Lift Systems” and click on “AVENTOS HF”.



The diagram below shows the lift mechanism tension adjustment.

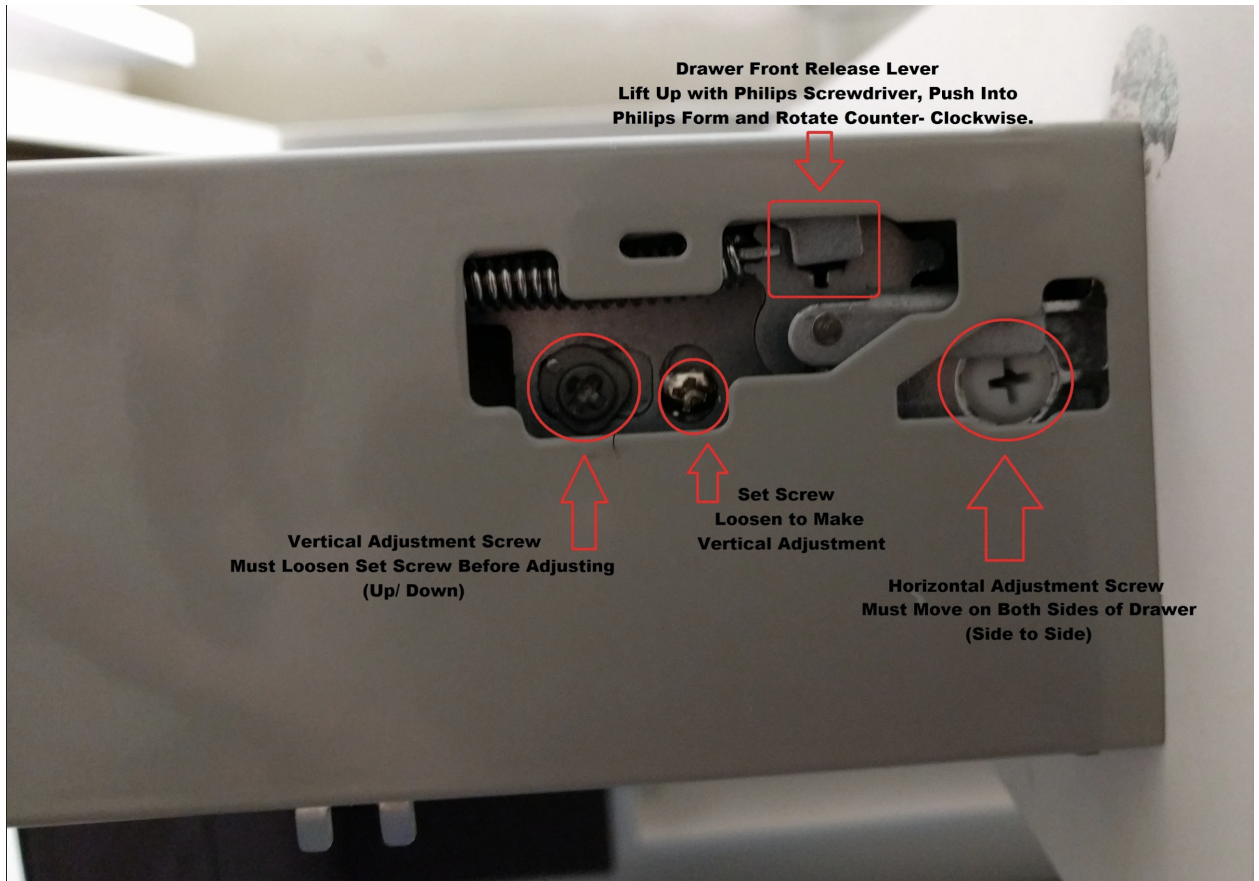


Drawer Alignment

You want approximately 1/16" reveal (or gap) between drawer fronts. All reveals are 1/16". Use the same reveal size throughout. We suggest using a calibrated shim to help you achieve consistent spacing.

Drawers feature tool-free tilt adjustments.

1. **Quick motion.** This is our standard drawer box and identified by it's light grey color and flanged out box. It can be adjusted up and down plus and side to side.

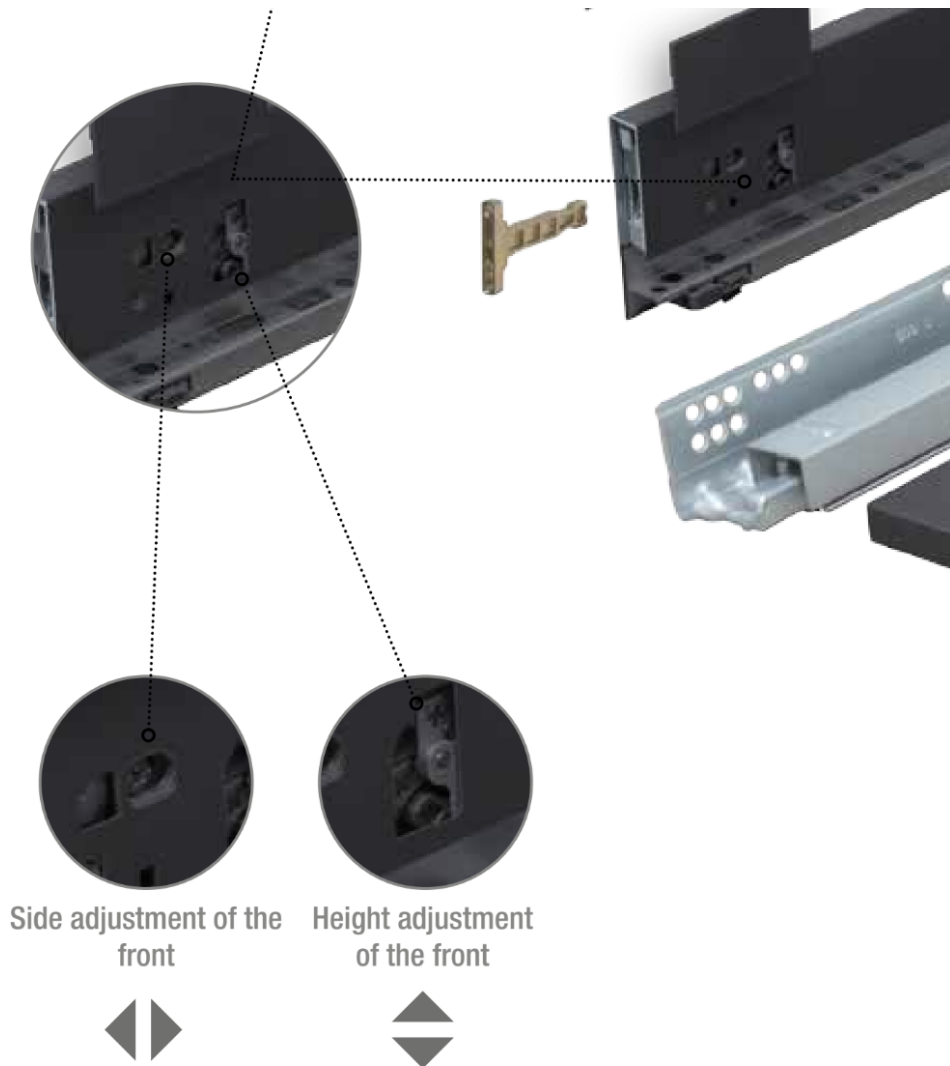


2. Removing the drawer boxes from the glides by extend the runners fully and lift up with a quick motion. Replace the drawer on the runners and close, the locking devices automatically engage with the runners.



Click on the link to view [Quick Motion Drawer- How to remove Video.MOV](#)

Evolution Drawer box. This is our upgraded drawer box. It can be identified by its rich grey color and slim lined drawer box. It can adjust it up and down adjustments and side to side adjustments.

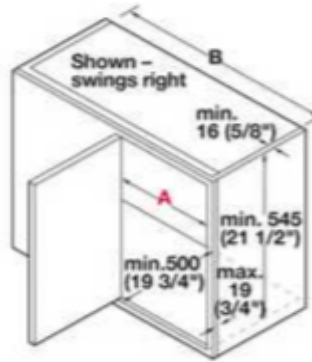






Hafele LeMans Installation

1. Hafele LeMans corner unit comes with an installation guide in the box. You may also find the video to be a helpful companion. *Click on the link to view the video.* https://youtu.be/7QtIHE_Jbqw



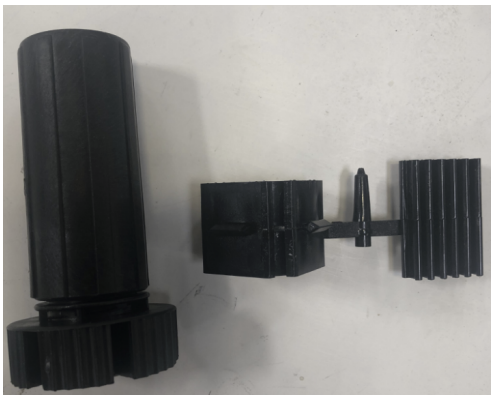
2. The Model 45 Lemans corner unit has 723 sq/in capacity with (2) 15" trays which move independently of each other.
3. After the Lemans unit is installed there will be a 9" gap between the unit and the back of the cabinet.
4. The Model 45 best suits the Euro Frameless corner blind base cabinet because the opening for the door is 16 ½". See below chart.



Model/Tray Shape	Framed A min.	Frameless A min.	B min.
40 	355 mm (14")	362 mm (14 1/4")	780 mm (30 3/4")
45 	410 mm (16 1/8")	419 mm (16 1/2")	820 mm (32 1/4")
50 	450 mm (17 3/4")	467 mm (18 3/8")	920 mm (36 1/4")
60 	540 mm (21 1/4")	565 mm (22 1/4")	965 mm (38")

Toe Kick Installation

1. The black plastic feet attach to the base cabinets and are adjustable to 4.5". A toe kick cover is required to cover the exposed toe kick foot.
2. The toe kick clip attaches to the black plastic toe kick foot.



3. The toe kick clip has dual functionality; used for either the matching toe kick or the aluminum toe kick.
4. Matched toe kick option-There is a "T" tab feature on the grooved plate which will need to be removed for the installation of the matched toe

kick option. This is done so the plate will fit flush with the matching toe kick. For the aluminum toe kick option you do not need to remove the "T" tab feature.

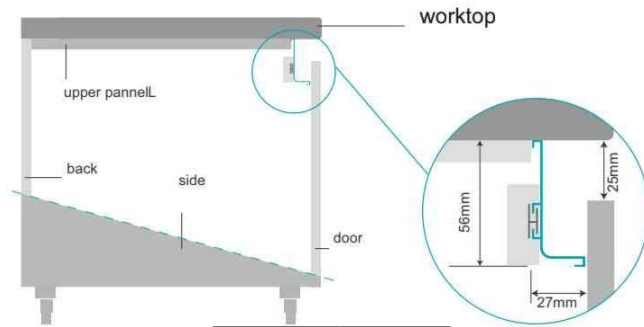
5. Aluminum finish- The toe kick has a track in which the toe kick clip "T" tab glides into. Do not remove the "T" tab feature.



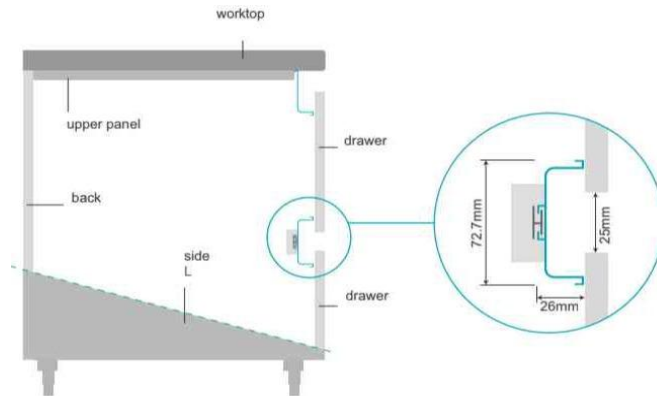
6. Toe kick covers with an aluminum finish have a track in which the toe kick clip "T" tab glides into.

Channel Installation for Base Cabinets

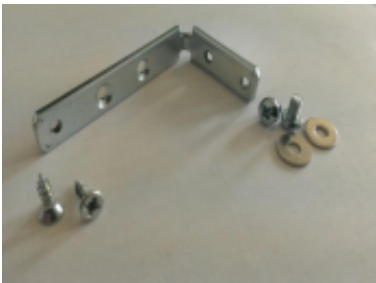
1. Before installation of the aluminum channel into the pre-milled notch, remove the doors and drawers. This an essential first step to prevent unnecessary scratches.
2. The channel “J” shaped profile fits into the top grooved profile.



3. The channel “C” shaped profile fits into the intermediate profile.



4. Cut the channels to the length of the base run.
5. The clips for the “J” channel are a support which fits into the groove on the back of the channel and attaches to the casework





6. The “C” channel is installed onto the casework in the intermediate premilled profile.
7. The “C” channel is installed using a clear epoxy as featured.



8. After installation of the channels are complete the doors can be reattached to the casework and the drawers reinserted into the base.

CABINET CARE

- Mod Cabinetry's Euro Collection is durable, scratch resistant, heat resistant and water resistant with normal daily use in today's homes.
- Treat your cabinets as you would any fine furniture. Wipe spills promptly.



- Clean your cabinets occasionally by dampening a soft cloth (not paper towels) with a mild non-detergent soap. Wipe the surface then rinse with a clean damp cloth and dry promptly.

General Notes

- Do not use paper towels to clean or wipe any cabinetry. Paper towels are surprisingly abrasive and may scratch finishes.
- Do not use any cleaners containing alcohol, solvents or abrasives.
- When cleaning cabinets with glass doors, spray glass cleaner onto cleaning cloth, not directly onto glass. Overspray from a glass cleaner may damage adjacent finishes.
- The panels feature a low adhesive product label and protective film which is easily peeled from the panels and fronts. It's suggested the protective film is not removed until the project is complete and the drawers and doors have been aligned. When using 3rd party hardware the protective film should be removed prior to installation.
- The panels with High Gloss finishes may also have a protective edge banding.

WARRANTY TERMS AND PROCEDURES

Product Warranty

This warranty applies to cabinetry that you have enjoyed for years.

The Euro Collection by Mod Cabinetry and its manufacturer warrant Mod Cabinetry products to be free from defects in material and workmanship as they are owned by the original homeowner. The warranty is for a five-year period when purchased. Mod Cabinetry and its manufacturers may elect to repair or replace any product covered by this warranty.

This warranty does not cover the following: costs of removing warranted material or the installation of replacement material, items that have been improperly stored or improperly installed, normal wear and tear, or damage/defects caused by misuse, abuse, negligence, or modification in any way.



Mod Cabinetry and its manufacturers reserve the right to inspect claimed defective products. No returns, replacements or repairs may be made without prior written consent. Some replacement parts may vary from those originally supplied and are subject to availability. This warranty is the sole warranty of Mod Cabinetry and its manufacturers, and in lieu of all other warranties, expressed or implied, including any implied warranty of merchantability or fitness for a particular use. We do not assume any other liability in connection with the sale of our products.

To file a warranty claim, contact Mod Cabinetry. A copy of the original purchaser's dated receipt must be submitted with all claims.

This warranty extends only to the original homeowner and is nontransferable. Some states do not allow the exclusion or limitation of implied warranties or of incidental and consequential damages, therefore, this limitation or exclusion may not apply. In such cases, the duration of any implied warranty shall be the same as that of the expressed warranty as stated herein.

Mod Cabinetry does not consider claims for reimbursement for lost time or wages due to shortages, damage or shipping related delays.

Damage Warranty

This warranty applies to cabinetry that is received damaged by the shipper or believed to be manufactured incorrectly.

Mod Cabinetry reserves the right to either replace or repair any cabinet(s) that have been damaged during shipment or that have not been manufactured correctly. If you have received something you believe is damaged, email Mod Cabinetry immediately with photos of the item. We will work with you to find a solution, or repair/replace the product.

Additionally, if you believe something has not been manufactured correctly, email Mod Cabinetry immediately with photos of the item in question. Oftentimes something may appear incorrect but is actually detailed differently than expected.

Do:

1. If you see minor damage, note it on the delivery paperwork.
2. Written confirmation of any damage must be noted on the delivery receipt in order for a claim to be considered.



3. Will Call-Should you notice any damage to the exterior of the packages please make a note on the paperwork BEFORE YOU LOAD ON YOUR TRUCK.
4. Curbside-Should you notice any damage to the exterior of the packages please make a note on the paperwork BEFORE THE DRIVERS LEAVE. If you do not do this you are responsible for any damage found later.
5. Note ambiguous package damage as 'possible concealed damage'. The shipping fee includes two weeks of free storage. Should you need more time please inquire about storage pricing.
6. Report concealed damage claims within fourteen (14) days of delivery.
7. Describe the damage. A photo of the damaged product must accompany the claim.

Don'ts:

1. Don't worry. While shipping damage and manufacturer errors can happen, we have a process to resolve them. We will work with you and the installer to resolve the issue as quickly as possible.
2. Don't install damaged cabinetry without a reply from us first. If we need to replace a cabinet and you've already installed it, we do not pay to remove it.
3. Don't try to repair it yourself and bill us later. Communicate with us first and send photos with a description of the damage or error so we can work together and resolve the issue.

Notes on Warranty:

1. Warranty orders are only for products previously produced by Mod Cabinetry. Changes or substitutions from originally ordered products are not accepted.
2. Mod Cabinetry may require the manufacturer's representative to inspect the warrantied item(s) and also may require the item(s) to be returned for quality assurance inspection.

If you believe you have a warranty issue please contact us at stephanie@modcabinetry.com

